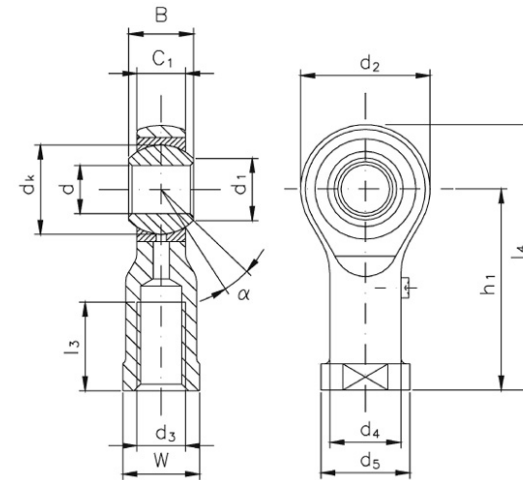


**Mating Materials:**  
**Steel on high-duty bronze**  
**Maintenance required**

Standard  
 DIN ISO 12240-4 dimension  
 series K

- Inner ring:** Antifriction bearing steel, hardened, ground and polished.
- Outer ring:** Swaged around the inner ring, sliding face made of high-duty bronze. Lubricant is distributed via the lubrication groove in the outer ring.
- Housing:** Sizes 3 to 12 free-cutting steel, sizes 14 to 50 tempering steel (standardised), all sizes galvanized and chromatised. The spherical bearing is pressed into the housing and caulked at both sides.
- Lubrication nipple:** Sizes 3 and 5 without lubrication nipple. Sizes 6 to 50 lubrication nipple DIN 3405, shape D. Further lubrication nipple shapes available on request.

- Special versions:**
- Housing heat-treated, for static load capacity C0 see-V
  - Housing made from high-grade tempering steel (heat-treated), for static load capacity C0 see -L



## product group overview

Productnumber	d	d3	B	C1	d1 ~	d2 max.	d4 ~	d5	dk	h1	l3 min.	l4 ~	W	Load ratings stat C0 Standard	Load ratings stat C0 -V	Load ratings stat C0 -L	Tilt angle	Weight
	mm	mm	mm	mm	mm	mm	mm	mm	mm	mm	mm	mm	mm	kN	kN	kN	°	kg
KI 3	3	M3	6	4,50	5,1	15	6,5	8	7,9	21	8	28,5	7	4	-	-	13	0,008
KIL 3	3	M3LH	6	4,50	5,1	15	6,5	8	7,9	21	8	28,5	7	4	-	-	13	0,008
KI 5	5	M5	8	6,00	7,7	19	9,0	11	11,1	27	8	36,5	9	6	-	-	13	0,017
KIL 5	5	M5LH	8	6,00	7,7	19	9,0	11	11,1	27	8	36,5	9	6	-	-	13	0,017
KI 6	6	M6	9	6,75	8,9	21	10,0	13	12,7	30	9	40,5	11	7	-	-	13	0,025
KIL 6	6	M6LH	9	6,75	8,9	21	10,0	13	12,7	30	9	40,5	11	7	-	-	13	0,025
KI 8	8	M8	12	9,00	10,3	25	12,5	16	15,8	36	12	48,5	14	12	16	21	13	0,043
KIL 8	8	M8LH	12	9,00	10,3	25	12,5	16	15,8	36	12	48,5	14	12	16	21	13	0,043
KI 10	10	M10	14	10,50	12,9	29	15,0	19	19,0	43	15	57,5	17	15	19	27	13	0,072
KIL 10	10	M10LH	14	10,50	12,9	29	15,0	19	19,0	43	15	57,5	17	15	19	27	13	0,072
KI 12	12	M12	16	12,00	15,4	33	17,5	22	22,2	50	18	66,5	19	23	25	35	13	0,107
KIL 12	12	M12LH	16	12,00	15,4	33	17,5	22	22,2	50	18	66,5	19	23	25	35	13	0,107
KI 14	14	M14	19	13,50	16,8	37	20,0	25	25,4	57	21	75,5	22	24	34	46	15	0,160
KIL 14	14	M14LH	19	13,50	16,8	37	20,0	25	25,4	57	21	75,5	22	24	34	46	15	0,160
KI 16	16	M16	21	15,00	19,3	43	22,0	27	28,5	64	24	85,5	22	34	43	57	15	0,210
KIL 16	16	M16LH	21	15,00	19,3	43	22,0	27	28,5	64	24	85,5	22	34	43	57	15	0,210
KI 18	18	M18x1,5	23	16,50	21,8	47	25,0	31	31,7	71	27	94,5	27	39	49	77	15	0,295

Productnumber	d	d3	B	C1	d1 ~	d2 max.	d4 ~	d5	dk	h1	l3 min.	l4 ~	W	Load ratings stat C0 Standard	Load ratings stat C0 -V	Load ratings stat C0 -L	Tilt angle	Weight
KIL 18	18	M18x1,5LH	23	16,50	21,8	47	25,0	31	31,7	71	27	94,5	27	39	49	77	15	0,295
KI 20	20	M20x1,5	25	18,00	24,3	51	27,5	34	34,9	77	30	102,5	30	42	50	78	15	0,380
KIL 20	20	M20x1,5LH	25	18,00	24,3	51	27,5	34	34,9	77	30	102,5	30	42	50	78	15	0,380
KI 22	22	M22x1,5	28	20,00	25,8	55	30,0	37	38,1	84	33	111,5	32	54	70	101	15	0,490
KIL 22	22	M22x1,5LH	28	20,00	25,8	55	30,0	37	38,1	84	33	111,5	32	54	70	101	15	0,490
KI 25	25	M24x2	31	22,00	29,5	61	33,5	42	42,8	94	36	124,5	36	60	78	131	15	0,650
KIL 25	25	M24x2LH	31	22,00	29,5	61	33,5	42	42,8	94	36	124,5	36	60	78	131	15	0,650
KI 30	30	M30x2	37	25,00	34,8	71	40,0	50	50,8	110	45	145,5	41	82	107	182	15	1,150
KIL 30	30	M30x2LH	37	25,00	34,8	71	40,0	50	50,8	110	45	145,5	41	82	107	182	15	1,150
KI 35	35	M36x2	43	28,00	37,7*	81	46,0	58	57,1	125	56	165,5	50	96	-	-	16	1,600
KIL 35	35	M36x2LH	43	28,00	37,7*	81	46,0	58	57,1	125	56	165,5	50	96	-	-	16	1,600
KI 40	40	M42x2	49	33,00	45,2*	91	53,0	65	66,6	142	60	187,5	55	145	-	-	17	2,400
KIL 40	40	M42x2LH	49	33,00	45,2*	91	53,0	65	66,6	142	60	187,5	55	145	-	-	17	2,400
KI 50	50	M48x2	60	45,00	56,6*	117	65,0	75	82,5	160	65	218,5	65	209	-	-	12	5,000
KIL 50	50	M48x2LH	60	45,00	56,6*	117	65,0	75	82,5	160	65	218,5	65	209	-	-	12	5,000

\*) deviates from standard

-) not available